



**THE "MARINO" ELECTRIC
WALL MOUNTED FEATURE FIRE
INSTALLATION AND USER INSTRUCTIONS**

MODEL No. FWRLRE**

**THESE INSTRUCTIONS SHOULD BE RETAINED
BY THE USER FOR FUTURE REFERENCE**



**Handle this appliance only on the outer edges of the frame
to avoid marking the plastic screen.**

ON RECEIPT

The appliance should be examined on receipt. If it is found to be damaged in any way you should inform your supplier immediately.

LIST OF COMPONENTS

1. Electric Decorative Appliance with Fan Heater
2. 2 x 3mm Magnets
3. 2x Wall Mounting Brackets
4. 2x No8 Self Taper Screws
5. 6x No10 Screw and Masonry Plugs
6. Remote Control Unit
7. 23A High Power Battery
8. Installation and User Instructions
9. Guarantee Card

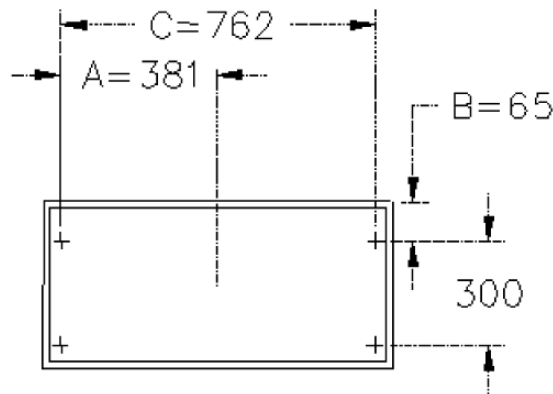
GENERAL INFORMATION

- This appliance an electrical heating appliance and therefore young children should not be left unsupervised in the room where it is in use.
- As with any fire, certain components will become hot in use.
- Do not cover the front of the heater in any way. Furniture and furnishings must not be placed within one metre of the front of the fan heater, as this could constitute a fire risk
- Ensure that the appliance is not placed so as to obscure its socket outlet.
- This appliance must not be used outdoors nor in the immediate surroundings of a bath, shower, or swimming pool.
- Do not permanently fix the appliance; it may need removing for servicing.
- In the unlikely event that the appliance is damaged or develops a fault, the appliance must be returned to the place of purchase for repair or exchange.
- As with any heating appliance certain components will become hot in use.

FITTING INSTRUCTIONS

This appliance is designed for fitting to a vertical wall, connected to a 13A outlet using the factory fitted cable and plug. If it is desired to hide the supply in the wall see the separate instructions 'Hidden Supply Considerations'.

1. Hold the appliance in the desired position and ensure that there is free airflow to the base (min 100mm) and sufficient clearance around the heater outlet. If an optional fascia is to be used then an additional allowance will be needed depending on the fascia selected.
2. Mark the centre top and place the appliance safely away from the work area.
3. Measure vertically down the distance 'B' shown in the "wall fixing positions" diagram and mark a horizontal line.
4. Using the wall brackets or the bracket assembly as a marking template, align the top holes with the horizontal line and mark the fixing hole positions. NOTE; the tabs go to the bottom and the fixing screws go inwards to be hidden from eventual view.



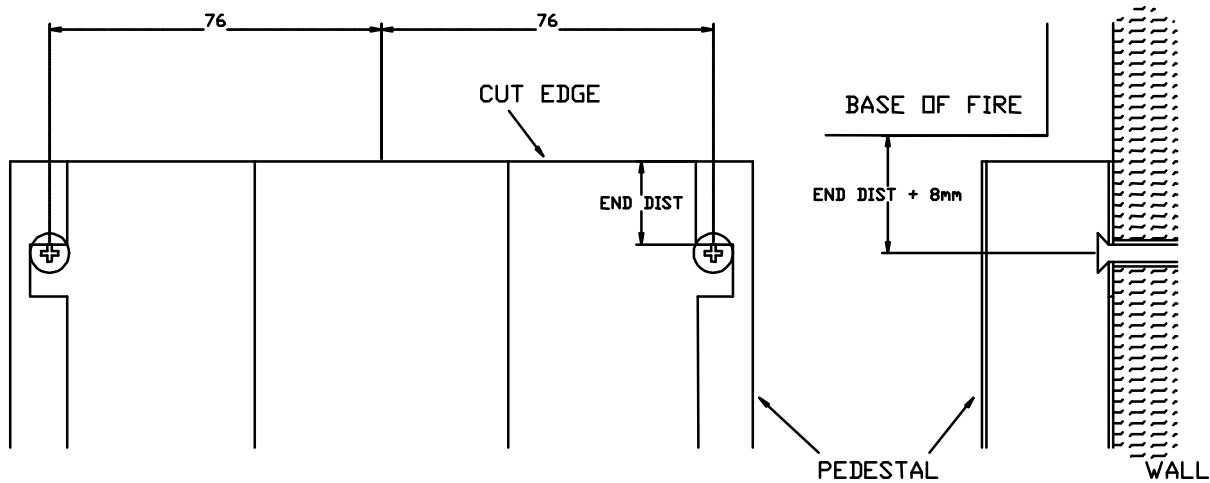
5. Drill the wall and using the wall plugs and screws provided fit the wall bracket assembly.
6. Hang the appliance on the wall brackets and lock it to the brackets with two screws (supplied) in the bottom holes.
7. Route the mains cable inconspicuously to a supply socket. Note: The heater must be positioned so that the plug is accessible at all times.
8. Landscape product; The front screen is retained during transport by two screws, during installation move these to the adjacent slotted positions to allow easier screen removal.

PEDESTAL FITMENT

The decorative pedestal is designed to fit under the appliance and enhance the dramatic effect whilst masking the supply cables. Depending on the height of installation it will need to be cut to a suitable length.

1. Measure the distance from the bottom fitting position to the base of the fire located behind the front frame.
2. Cut the pedestal to this distance less 6mm. NOTE: The cut end should be positioned to the top so that it will be hidden behind the lower edge of the frame.

3. Measure the end distance from the cut end to the edge of the first notch. Then mark the wall vertically down from the centre base of the fire a distance equal to (END DISTANCE + 8mm) as shown in the diagram.



4. Drill two screw holes 76mm horizontally either side of the mark, fit the wall plugs and screw the screws in until the heads are almost entering the wall, as show in the diagram.
5. Hang the pedestal on the screws. If the pedestal is loose, tighten the screws by a quarter turn until the best fit is obtained.

HIDDEN SUPPLY CONSIDERATIONS

NOTE: Mains installations should only be carried out by an approved electrician.

This appliance may have the factory fitted cable removed and be directly connected via the three terminal connecting block provided.

The following considerations **must** be observed.

- This appliance must be earthed.
- A fused double-pole isolating switch must be used.
- The isolating switch must not be vertically below the appliance and must be accessible at all times.
- A flush cable outlet should be used behind the appliance ensuring safety during servicing and decorating.
- The cable outlet should not obscure any rear air vents into the heater.

DECORATIVE FASCIA

Decorative fascias are an optional extra.

The fascias hook on to the appliance and are held in position by small magnets. For thin (15mm) fascias place the two magnets on the bottom front corners of the appliance and for thick (50mm) fascias place the magnets on the small lower tabs on the inside bottom of the fascias.

Hang the fascia centrally via the mounting hooks, holding the bottom away whilst adjusting the alignment.

When central push the bottom back against the magnets.

CLEANING

Decorative fascias should be cleaned with a damp cloth only.

The appliance **MUST** be isolated from the mains before cleaning. Use a spray cleaner suitable for soft plastics applied to a soft cloth, do not spray the appliance directly as the chemical will enter and adversely affect the appliance. **DO NOT** use abrasive cleaners.

AUTOMATIC CUT-OUT

A thermal cut-out device is fitted to prevent damage due to overheating. Once activated the heater is deactivated until it has been turned off completely for at least three minutes. Never cover air inlets or outlets and ensure air inlets are kept free of fluff, dust etc.

FITTED PLUG

This appliance is fitted with a plug and 13A fuse suitable for a 240Vac supply. Replacement fuses must be 13A and ASTA approved.

If the appliance is fitted with a moulded plug and it is necessary to cut off the plug for any reason then the plug must be discarded. Under no circumstances should any attempt be made to re-use the plug.

IMPORTANT: The wires of this mains lead are coloured with the following code:

Green/yellow:	earth
Blue:	neutral
Brown:	live

WARNING – THIS APPLIANCE MUST BE EARTHED

LAMP REPLACEMENT

Replace only with a lamp of the correct wattage. Higher wattage lamps will damage the fire effect and may constitute a fire risk. Use 60W clear candle lamp SES fitting.

WARNING – Disconnect from the mains supply when changing lamps or undertaking any form of cleaning or maintenance.

1. Remove the plug from the mains socket or isolate from the electric supply.
2. Where fitted, lift off the decorative fascia.
3. Loosen the two screws at the base of the front screen and pull the base of the screen away from the locating slots, then lift it up and off the appliance. The top screws do not need loosening or removal
4. Remove the screws holding the internal screen and lift it and the fire bed moulding away.
5. Replace the faulty lamp taking care not to damage the flame ribbons.
6. After changing a lamp, reassemble the appliance in the reverse order. Locating the top screen slots over the positioning screws before locating the base screws in the bottom locating slots. Tighten the base screws to secure the front screen, **do not** tighten the top screws.

OPERATION

Appliance Controls

The power switch and thermostat control are to be found on the side or top of the appliance.

The rocker switch (O | I) - controls the power to the appliance only. When set to the (I) position the appliance is in stand-by mode and will then respond to the handset.

The rotary control – adjustment in-between the maximum and minimum settings will allow you to set a comfortable temperature in the room.

Remote Control Handset

The remote control has been designed to provide convenient control of the appliance.

This remote uses radio frequency control signals and operates your appliance within a distance of 7.5m (25ft). This includes operation through windows, walls, floors and ceilings.

Controls

Fire ON

To  turn on with the previously set light intensity, just press this button.

Heat ON/OFF O/I

Heater operation is provided by this button. Press once to turn the fan heater on at the low rate. Press again to turn the fan heater off.

Heat High/Low I/II

Each time this button is pressed the fan heater will switch between high and low.

Dimmer

Press and release and the light will continuously cycle between high and low intensity. When the desired intensity is reached, press this button again to set. This will stay even after the fire is switched off. Should the power supply to the fire itself be turned off the lamp intensity setting will be lost.

Fire OFF

All functions turn off when this button is pressed. The fire is set to stand-by mode.

Please remember that there remains a live supply within the appliance at this setting.

Do not attempt to service the internal components isolating the appliance from the mains.

Replacing the handset battery

Remove the small cover on the back of the handset. Remove the battery. Replace it with the same type 23A 12V battery and replace the cover.

INTERFERENCE WITH OTHER DEVICES

This remote control uses radio frequency (RF) control signals. If interference with other RF control devices is observed then provision is provided to alter the frequency the appliance uses. NOTE: Adjustment of the control frequency should only be performed by a suitably qualified electrician.

The remote control and radio receiver in the appliance is factory pre-set to option 'A'. Fifteen further options are available (B to P); we recommend each option is tried in turn, A to B, B to C etc, until the interference is removed.

Setting the handset option

Rotate the arrow on the back of the handset clockwise to the option you are setting on the control board.

Setting the control board option

Isolate the appliance from the supply. The control board is located under the lower case cover on portrait models and under the left heater cover on landscape models. Set the DIP switch to the setting appropriate for the option selected on the handset.

OPTION	Switch 1	Switch 2	Switch 3	Switch 4
A	ON	ON	ON	ON
B	ON	ON	ON	OFF
C	ON	ON	OFF	ON
D	ON	ON	OFF	OFF
E	ON	OFF	ON	ON
F	ON	OFF	ON	OFF
G	ON	OFF	OFF	ON
H	ON	OFF	OFF	OFF
I	OFF	ON	ON	ON
J	OFF	ON	ON	OFF
K	OFF	ON	OFF	ON
L	OFF	ON	OFF	OFF
M	OFF	OFF	ON	ON
N	OFF	OFF	ON	OFF
O	OFF	OFF	OFF	ON
P	OFF	OFF	OFF	OFF



CAUTION: When leaving your home unattended for any extended period it is recommended to isolate the mains supply in case spurious interference affects the appliance.

SPARES

If you require spare parts please contact your supplier.



CAUTION: Under no circumstances must flammable liquids be used on or within close proximity to this appliance.

B-111790

Issue 2

BFM Europe Limited

Trentham Lakes

Stoke on Trent, Staffordshire ST4 4TJ

Tel: (01782) 339000 Fax: (01782) 339009

Email: info@bfm-europe.com

www.bfm-europe.com